

# Shelves



## RAB-UP-xxx-A1, RAC-UP-xxx-A1

Shelf with perforation 1U

Type	Depth (mm)	Max. loading capacity (kg)
<b>RAx-UP-150-A1</b>	150	15
<b>RAx-UP-250-A1</b>	250	20
<b>RAx-UP-350-A1</b>	350	40
<b>RAx-UP-450-A1</b>	450	40
<b>RAx-UP-550-A1</b>	550	40
<b>RAx-UP-650-A1</b>	650	40
<b>RAx-UP-750-A1</b>	750	40

- Supply**

Screw M6 x 10  
 (dimensions 150 and 250 mm – 4x) ..... 8x  
 Plastic washer  
 (dimensions 150 and 250 mm – 4x) ..... 8x
- Captive nut M6  
 (dimensions 150 and 250 mm – 4x) ..... 8x  
 Screw M5 x 12 Thorx  
 (dimensions only 350 mm and larger) ..... 4x  
 Back holder  
 (dimensions only 350 mm and larger) ..... 2x



## RAB-UP-X09-A1, RAC-UP-X09-A1

19" Drop-down shelf for keyboard, maximum loading capacity 15 kg.

- **Supply**  
 Screw M6 x 10..... 4x  
 Plastic washer ..... 4x  
 Captive nut M6 ..... 4x



**RAB-UP-X29-A1, RAC-UP-X29-A1**

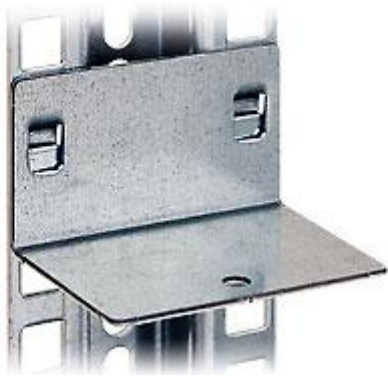
19" Sliding lockable shelf 2U for keyboard and mouse

- **Supply**  
 Screw M6 x 10..... 8x  
 Plastic washer ..... 8x  
 Captive nut M6 ..... 8x



**RAX-DR-X01-X1**

Rear holder of shelves for RBA wall mounted cabinets – a pair.



**RAX-DR-X02-X1**

Shelf holders for middle vertical rail of free-standing cabinets deeper than 800 mm – a pair.

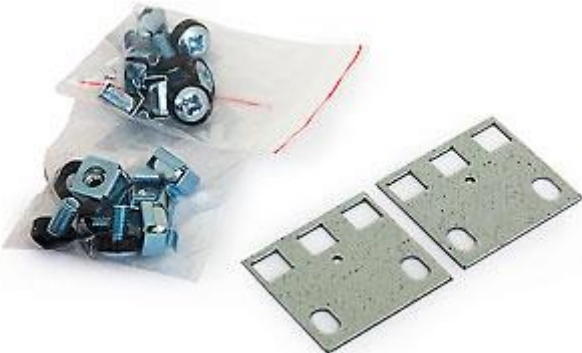


**RAX-DR-X03-X1**

Holder for middle rail (pair), allows installation of standard 19" equipment.

**Supply**

- Screw M6 x 10..... 4x
- Plastic washer ..... 4x
- Captive nut M6 ..... 4x



**RAX-RV-X01-X2**

Adapter 23"/21" and 21"/19" universal for 1U - a pair.



**RAB-UP-xxx-H4, RAC-UP-xxx-H4**  
19" Heavy duty shelf

Type	Depth (mm)	Max. loading capacity (kg)
<b>RAx-UP-450-H4</b>	450	150
<b>RAx-UP-550-H4</b>	550	150
<b>RAx-UP-650-H4</b>	650	150
<b>RAx-UP-750-H4</b>	750	150
<b>RAx-UP-850-H4</b>	850	150
<b>RAx-UP-950-H4</b>	950	150

**Supply**

- Screw M6 x 10  
(dimensions 150 and 250 mm – 4x) ..... 8x
- Plastic washer  
(dimensions 150 and 250 mm – 4x) ..... 8x
- Captive nut M6  
(dimensions 150 and 250 mm – 4x) ..... 8x
- Screw M5 x 12 Thorx  
(dimensions only 350 mm and larger) ..... 4x



**RAB-UP-xxx-A4, RAC-UP-xxx-A4**  
19" Shelf with perforation 1U.  
Patent: PUV 2012-25430.

Type	Depth (mm)	Max. loading capacity (kg)
------	------------	----------------------------

<b>RAx-UP-150-A4</b>	150	15
<b>RAx-UP-250-A4</b>	250	15
<b>RAx-UP-350-A4</b>	350	50
<b>RAx-UP-450-A4</b>	450	80
<b>RAx-UP-550-A4</b>	550	80
<b>RAx-UP-650-A4</b>	650	80
<b>RAx-UP-750-A4</b>	750	80
<b>RAx-UP-850-A4</b>	850	80
<b>RAx-UP-950-A4</b>	950	80

**Supply**

- Screw M6 x 10  
(dimensions 150 and 250 mm – 4x) ..... 8x
- Plastic washer  
(dimensions 150 and 250 mm – 4x) ..... 8x
- Captive nut M6  
(dimensions 150 and 250 mm – 4x) ..... 8x
- Screw M5 x 12 Thorx  
(dimensions 150 and 250 mm – 4x) ..... 8x



**RAB-UP-Xxx-A1, RAC-UP-Xxx-A1**

19" sliding shelf - height 45 mm

Type	Depth (mm)	Max. loading capacity (kg)
<b>RAx-UP-X30-A1</b>	350	30
<b>RAx-UP-X31-A1</b>	450	30

<b>RAx-UP-X20-A1</b>	550	45
<b>RAx-UP-X19-A1</b>	650	45

**Supply**

Screw M6 x 10..... 8x  
 Plastic washer ..... 8x  
 Captive nut M6 ..... 8x



**RAB-UP-X40-A1, RAC-UP-X40-A1**

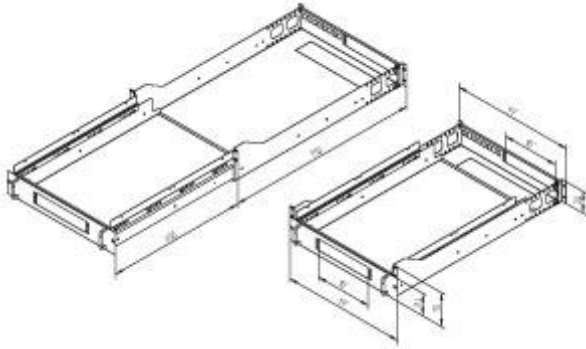
19" sliding / rotary shelf for keyboard and mouse. The height of the shelf is 60 mm.

Type	Depth (mm)	Max. loading capacity (kg)
<b>RAx-UP-X40-A1</b>	450	30

**Supply**

Screw M6 x 10..... 8x  
 Plastic washer ..... 8x  
 Captive nut M6 ..... 8x





**RAB-UP-X23-A1, RAC-UP-X23-A1**

19" Server base station 3U, 750 mm,  
max. load 45 kg

**Supply**

Screw M6 x 10.....	8x
Plastic washer .....	8x
Captive nut M6 .....	8x